

## STATIC or IN MOTION MOBILE TRAIN WEIGHER



MTW-S8 pictured, used in multiples as an alternative to a Static Weighbridge in preparing Test Wagons

### FEATURES:

- ✓ User friendly
- ✓ Four easy steps to install (2men - approx 15 minutes)
- ✓ Transportable in the boot of a car
- ✓ Loadcell based system
- ✓ In motion or Static weighing
- ✓ Wheel, axle, bogie and vehicle weight
- ✓ Multiple MTW's can be combined together
- ✓ Fits all recognised rail gauges
- ✓ Fits most rail sizes
- ✓ Instant printout or download to PC

### 4 easy steps to install:

The MTW is a train weighing system that can be transported in the boot of a car, utility or train cabin and set up to weigh and spot check a rail vehicle / train anywhere static or in motion.

The MTW offers one of the world's most convenient, safe & accurate train weighing solutions.

The MTW design incorporates a chassis arrangement with an integrated loadcell, this design means weight is applied directly to the loadcell and not through the rail.

The advantage of weighing axle by axle is that there is no restriction with regards to wagon type. The MTW is factory pre-calibrated, so that no transport of test weights are required. (individual wheel weights can also be obtained).



Battery operated digital readout - printer in carry case.

Approx. Dimensions  
49cm x 38cm x 23cm



Measuring the height to determine the packer size



Attaching the Rail Shoe



Inserting the MTW into the track and expanding the system via the threaded support poles



Connecting the cables, Wireless option also available

### BENEFITS:

- No track downtime during installation
- No costly civil works required
- Battery operated
- Simple operation



# MTW-S (STATIC)

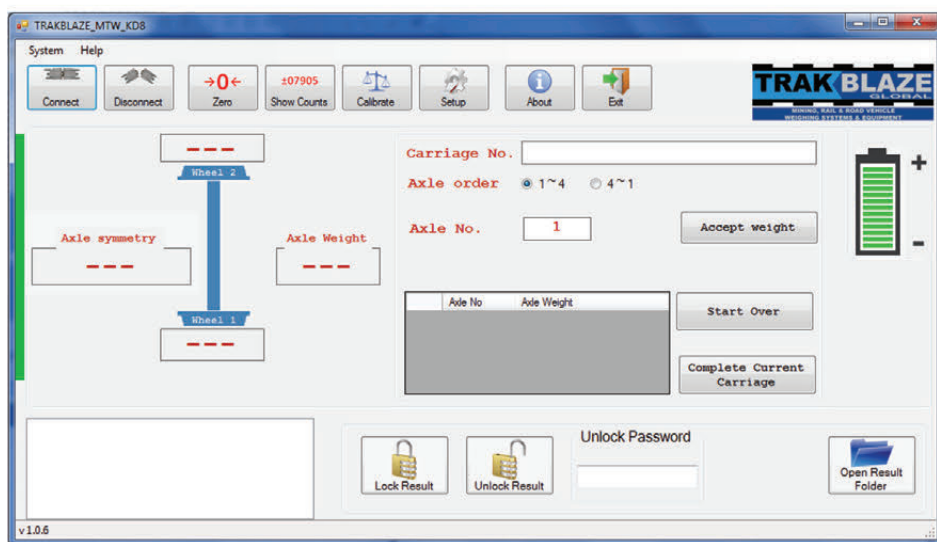
## TECHNICAL DATA

Length	600mm ~ 656mm
Approx. Weight	20kg -100kgs
Power Supply	240V AC / 12V internal battery
Materials	High quality tool and mild steel
Capacity	17.5t / wheel, 35t / axle
Increment Size	0.02t
Protection Class	IP-67 / IP-65
Temperature	-20°C ~ +70°C
Mounting	Rail shoes to fit rail type
Installation Time	10 ~ 15 minutes (two men)
Accuracy	+/- 0.5% Subject to good track condition and rolling stock
Standard Number of Bases/Wheels	Between 1 to 4 bases / 2 to 8 wheels (Over 4 bases available on request)

# MTW-D (IN-MOTION)

## TECHNICAL DATA

Length	600mm ~ 656mm
Approx. Weight	20kg -100kgs
Power Supply	240V AC / 12V internal battery
Materials	High quality tool and mild steel
Capacity	17.5t / wheel, 35t / axle
Increment Size	0.05t
Protection Class	IP-67 / IP-65
Temperature	-20°C ~ +70°C
Mounting	Rail shoes to fit most rail types
Installation Time	approx 10 ~ 15 minutes (two men)
Weighing Speed	Up to 5kmh
Accuracy (approx.)	2-3%. Less than 1% under ideal conditions



Customised PC software (optional) displays and records all the weight data

A/N	Wheel 1	Wheel 2	Axle Total	WC	km/h
Locomotive					
F	5350 kg	5850 kg	11200 kg	0	4.7
F	5350 kg	5850 kg	11200 kg	0	4.5
F	5350 kg	5850 kg	11200 kg	0	4.3
F	5350 kg	5850 kg	11200 kg	0	4.3
F	5350 kg	5850 kg	11200 kg	0	4.2
F	5350 kg	5850 kg	11200 kg	0	4.2
Wagon 1					
1	5350 kg	5850 kg	11200 kg	0	4.4
2	5350 kg	5850 kg	11200 kg	0	4.3
3	5350 kg	5850 kg	11200 kg	0	4.2
4	5350 kg	5850 kg	11200 kg	0	4.3
			44800 kg		
			Total wagon weight		
			44800 kg		

Sample of Printout from built in Printer

## CONSISTS OF (single base unit):

- 2 x loadcells
- 2 x scale main bodies
- 1 x set of shoes (to suit nominated rail type)
- 1 x set of spacers
- 1 x height measuring rod
- 1 x weight indicator and printer housed in carry case
- 1 x battery charger
- 1 x spanner
- 1 x cable set
- 1 x operation manual



MTW secure storage box.

Approx. Dimensions:  
120cm x 62cm x 72cm



MTW Kit

\* The MTW is not trade approved and should not be used for commercial transactions

Call or Email today to find out more.

Trakblaze Pty Ltd  
5 Mareno Road, Tullamarine, 3012 Victoria Australia  
Tel: +61 3 9318 9277 Fax: +61 3 9318 9533  
Email: info@trakblaze.com Web: www.trakblaze.com